

Spivey Hall is committed to making your concert experiences safe and gratifying.

Our first priority is the safety of our patrons, staff, and performers. Spivey Hall will follow the guidance from federal, state, and local officials to make safety our top priority.

For the latest COVID Safety Information from the University System of Georgia, click [HERE](#).

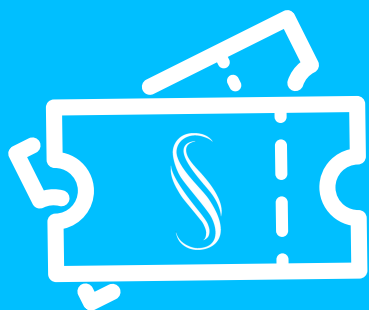
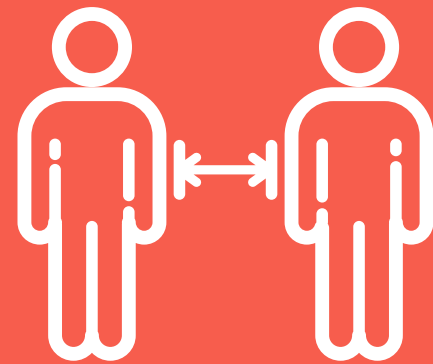


Enhanced Cleaning

- Our venue is cleaned thoroughly before and after performances, with enhanced sanitation procedures.
- Spivey Hall has been outfitted with HEPA (High Efficiency Particulate Air) filters in accordance with CDC guidelines.
- Multiple hand sanitation stations will be available for use throughout the venue.

Social Distancing

- We ask that all in attendance maintain a social distance from other patrons when possible while in lines and while mobile.
- Seating in venues will be at 50% capacity throughout the hall.



Digital Ticketing

- For all events, we have introduced print-at-home tickets.
- You will receive an email from Spivey Hall. Attached to the email is a PDF file containing your ticket(s).
- You may print them at home or show them on your phone when arriving at the venue.

Face Masks

- Face masks are strongly encouraged for all patrons visiting Spivey Hall.
- Disposable face masks will be available by request.
- Face masks will be worn by all Spivey Hall staff and volunteers.



Vaccines

- The University System of Georgia strongly encourages Covid-19 vaccination.
- For more information about the Covid-19 Vaccine, click [HERE](#).